

## Rohresägewerkzeuge und -halterungen

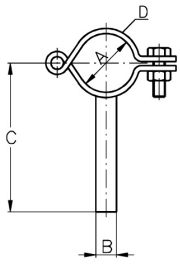
Art.Nr.

EUR

Art.Nr.

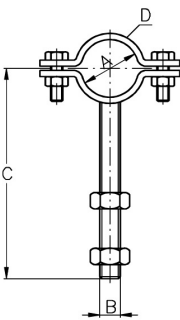
EUR

### Rohrschelle DIN, Schaft, klappbar



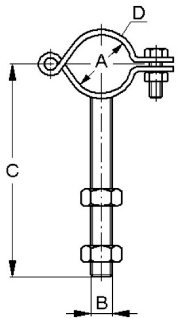
DN	Ø A Rohr	B	C	25x2			AISI304	
20	22-23	8	68				551332	28,30
25	28-29	10	71				551333	28,30
32	34-35	10	74				551334	30,10
40	40-41	10	77				551335	31,40
50	52-53	12	83				551336	35,10
65	70	12	92				551337	38,20
80	85	12	100				551338	41,90
100	104	12	109				551339	43,60

### Rohrschelle DIN, Gewindegewinde



DN	Ø A Rohr	B	C	20x3			AISI304	
10	12-13	M 8	74				551130	12,60
15	18-19	M 8	77				551131	12,60
20	22-23	M 8	79				551132	12,60
25	28-29	M 10	102				551133	10,70
32	34-35	M 10	105				551134	11,30
40	40-41	M 10	108				551135	11,80
50	52-53	M 12	114				551136	12,90
65	70	M 12	123				551137	15,20
80	85	M 12	130,5				551138	20,10
100	104	M 12	140				551139	21,60
125	129	M 16	168,5				551141	63,70
150	154	M 16	202				551142	85,50
200	204	M 20	225				551144	124,20

### Rohrschelle DIN, Gewindegewinde, klappbar



DN	Ø A Rohr	B	C	25x2			AISI304	
20	22-23	M 8	99				554232	28,30
25	28-29	M 10	102				554233	27,10
32	34-35	M 10	105				554234	29,50
40	40-41	M 10	108				554235	31,40
50	52-53	M 12	114				554236	32,90
65	70	M 12	123				554237	37,20
80	85	M 12	130,5				554238	42,60
100	104	M 12	140				554239	45,40